



ELECTRONIC COPY

LABORATORY GROWN DIAMOND REPORT

LG625459221

Report verification at igi.org

LABORATORY GROWN DIAMOND REPORT

LABORATORY GROWN DIAMOND REPORT

LABORATORY GROWN DIAMOND REPORT

March 8, 2024
IGI Report Number LG625459221
Description LABORATORY GROWN DIAMOND
Shape and Cutting Style ROUND BRILLIANT
Measurements 10.73 - 10.76 X 6.50 MM

GRADING RESULTS

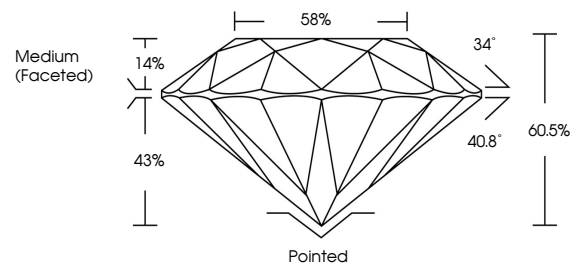
Carat Weight 4.60 CARATS
Color Grade F
Clarity Grade VS 1
Cut Grade IDEAL

ADDITIONAL GRADING INFORMATION

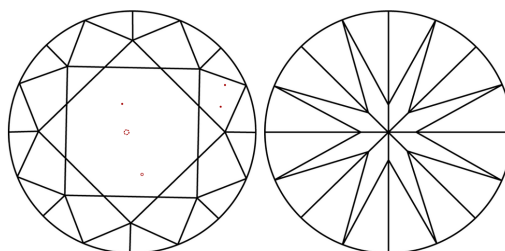
Polish EXCELLENT
Symmetry EXCELLENT
Fluorescence NONE
Inscription(s) IGI LG625459221

Comments: This Laboratory Grown Diamond was created by Chemical Vapor Deposition (CVD) growth process and may include post-growth treatment. Type IIa

PROPORTIONS



CLARITY CHARACTERISTICS



KEY TO SYMBOLS

Red symbols indicate internal characteristics.
Green symbols indicate external characteristics.

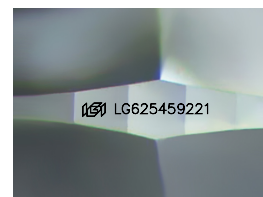
GRADING SCALES

CLARITY

Table mapping clarity grades (IF, VVS 1-2, VS 1-2, SI 1-2, I 1-3) to their descriptions (Internally Flawless, Very Very Slightly Included, etc.)

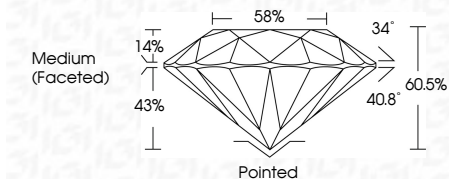
COLOR

Table mapping color grades (D, E, F, G, H, I, J, Faint, Very Light, Light) to their descriptions



Sample Image Used

March 8, 2024
IGI Report Number LG625459221
Description LABORATORY GROWN DIAMOND
Shape and Cutting Style ROUND BRILLIANT
Measurements 10.73 - 10.76 X 6.50 MM
GRADING RESULTS
Carat Weight 4.60 CARATS
Color Grade F
Clarity Grade VS 1
Cut Grade IDEAL



ADDITIONAL GRADING INFORMATION

Polish EXCELLENT
Symmetry EXCELLENT
Fluorescence NONE
Inscription(s) IGI LG625459221
Comments: This Laboratory Grown Diamond was created by Chemical Vapor Deposition (CVD) growth process and may include post-growth treatment. Type IIa



IGI

March 8, 2024
IGI Report No LG625459221
ROUND BRILLIANT
10.73 - 10.76 X 6.50 MM
4.60 CARATS
Color Grade F
Clarity Grade VS 1
Cut Grade IDEAL
Depth 60.5%
Table 58%
Girdle Medium (Faceted)
Culet Pointed
Polish EXCELLENT
Symmetry EXCELLENT
Fluorescence NONE
Inscription(s) IGI LG625459221
Comments: This Laboratory Grown Diamond was created by Chemical Vapor Deposition (CVD) growth process and may include post-growth treatment. Type IIa