



ELECTRONIC COPY

LABORATORY GROWN DIAMOND REPORT

July 22, 2022
IGI Report Number LG537251807
Description LABORATORY GROWN DIAMOND
Shape and Cutting Style ROUND BRILLIANT
Measurements 8.11 - 8.14 X 4.90 MM

GRADING RESULTS

Carat Weight 2.01 CARATS
Color Grade F
Clarity Grade SI 1
Cut Grade EXCELLENT

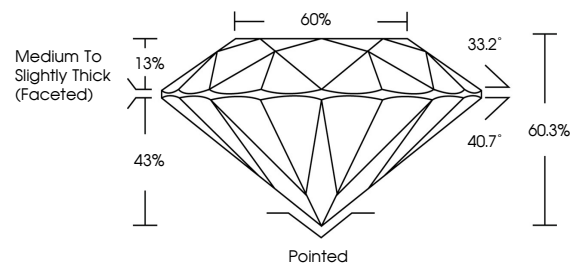
ADDITIONAL GRADING INFORMATION

Polish EXCELLENT
Symmetry EXCELLENT
Fluorescence NONE
Inscription(s) LABGROWN IGI LG537251807

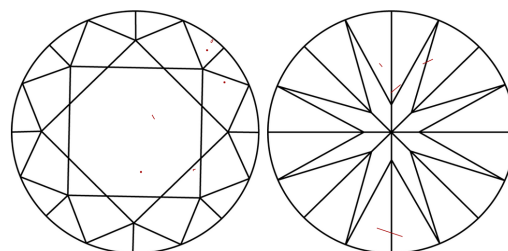
Comments: This Laboratory Grown Diamond was created by Chemical Vapor Deposition (CVD) growth process and may include post-growth treatment. Type IIa

LG537251807

PROPORTIONS



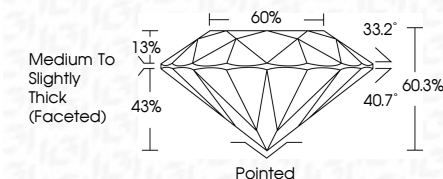
CLARITY CHARACTERISTICS



KEY TO SYMBOLS

Red symbols indicate internal characteristics.
Green symbols indicate external characteristics.

July 22, 2022
IGI Report Number LG537251807
Description LABORATORY GROWN DIAMOND
Shape and Cutting Style ROUND BRILLIANT
Measurements 8.11 - 8.14 X 4.90 MM
GRADING RESULTS
Carat Weight 2.01 CARATS
Color Grade F
Clarity Grade SI 1
Cut Grade EXCELLENT



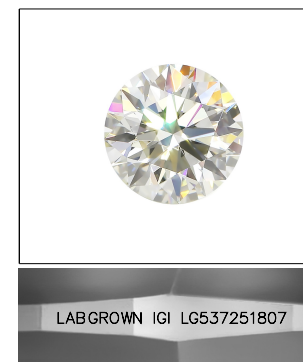
ADDITIONAL GRADING INFORMATION

Polish EXCELLENT
Symmetry EXCELLENT
Fluorescence NONE
Inscription(s) LABGROWN IGI LG537251807

Comments: This Laboratory Grown Diamond was created by Chemical Vapor Deposition (CVD) growth process and may include post-growth treatment. Type IIa

GRADING SCALES

Table with 2 rows: COLOR GRADING SCALE (CL, NC, FT, VLT, LT) and CLARITY (10x) GRADING SCALE (FL, IF, VVS, VS, SI, I).



LABGROWN IGI LG537251807

LASERSCRIBE SM

Sample Image Used



IGI

July 22, 2022
IGI Report No LG537251807
ROUND BRILLIANT
8.11 - 8.14 X 4.90 MM
Carat Weight 2.01 CARATS
Color Grade F
Clarity Grade SI 1
Cut Grade EXCELLENT
Depth 60.3%
Table 60%
Girdle Medium To Slightly Thick (Faceted)
Culet Pointed
Polish EXCELLENT
Symmetry EXCELLENT
Fluorescence NONE
Inscription(s) LABGROWN IGI LG537251807
Comments: This Laboratory Grown Diamond was created by Chemical Vapor Deposition (CVD) growth process and may include post-growth treatment. Type IIa