



ELECTRONIC COPY

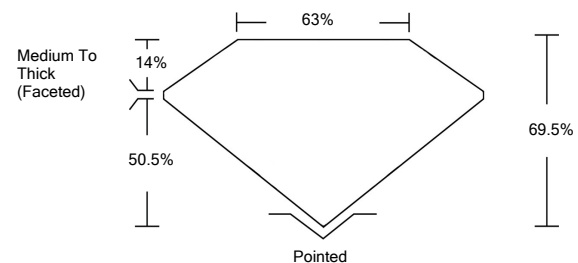
LABORATORY GROWN DIAMOND REPORT

April 23, 2022	
IGI Report Number	LG526266925
Description	LABORATORY GROWN DIAMOND
Shape and Cutting Style	SQUARE CUSHION BRILLIANT
Measurements	7.35 X 7.30 X 5.07 MM
GRADING RESULTS	
Carat Weight	2.10 CARATS
Color Grade	H
Clarity Grade	VVS 2
ADDITIONAL GRADING INFORMATION	
Polish	EXCELLENT
Symmetry	EXCELLENT
Fluorescence	NONE
Inscription(s)	LABGROWN IGI LG526266925

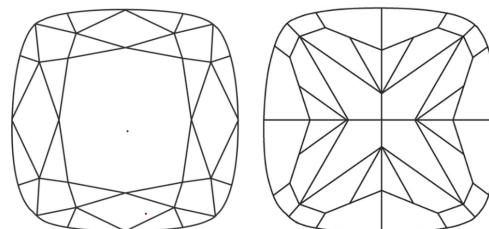
Comments: This Laboratory Grown Diamond was created by Chemical Vapor Deposition (CVD) growth process and may include post-growth treatment.
Type IIa

LG526266925

PROPORTIONS



CLARITY CHARACTERISTICS

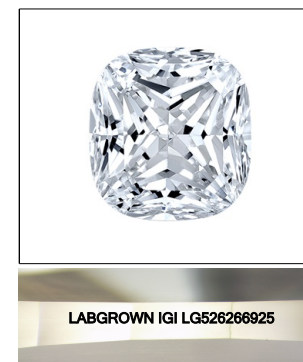


KEY TO SYMBOLS

Red symbols indicate internal characteristics.
Green symbols indicate external characteristics.

GRADING SCALES

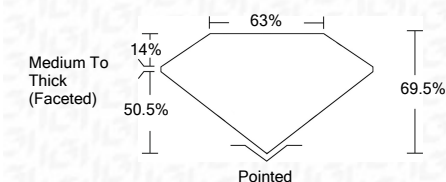
COLOR GRADING SCALE	CL	NC	FT	VL	LT	
	COLORLESS D-F	NEAR COLORLESS G-J	FAINT K-M	VERY LIGHT N-R	LIGHT S-Z	
CLARITY (10x) GRADING SCALE	FL	IF	VVS	VS	SI	I
	FLAWLESS INTERNALLY FLAWLESS	VERY VERY SLIGHTLY INCLUDED	VERY SLIGHTLY INCLUDED	SLIGHTLY INCLUDED	INCLUDED	



LASERSCRIBESM

Sample Image Used

April 23, 2022	
IGI Report Number	LG526266925
Description	LABORATORY GROWN DIAMOND
Shape and Cutting Style	SQUARE CUSHION BRILLIANT
Measurements	7.35 X 7.30 X 5.07 MM
GRADING RESULTS	
Carat Weight	2.10 CARATS
Color Grade	H
Clarity Grade	VVS 2



ADDITIONAL GRADING INFORMATION

Polish	EXCELLENT
Symmetry	EXCELLENT
Fluorescence	NONE
Inscription(s)	LABGROWN IGI LG526266925

Comments: This Laboratory Grown Diamond was created by Chemical Vapor Deposition (CVD) growth process and may include post-growth treatment.
Type IIa



IGI

April 23, 2022	
IGI Report No. LG526266925	
SQUARE CUSHION BRILLIANT	
7.35 X 7.30 X 5.07 MM	
Carat Weight	2.10 CARATS
Color Grade	H
Clarity Grade	VVS 2
Depth	69.5%
Table	63%
Grade	Medium To Thick (Faceted)
Culet	Pointed
Polish	EXCELLENT
Symmetry	EXCELLENT
Fluorescence	NONE
Inscription(s)	LABGROWN IGI LG526266925
Comments:	

This Laboratory Grown Diamond was created by Chemical Vapor Deposition (CVD) growth process and may include post-growth treatment.
Type IIa

